

Bramble Hall

Bramble Hill, Balcombe, West Sussex RH17 6HR



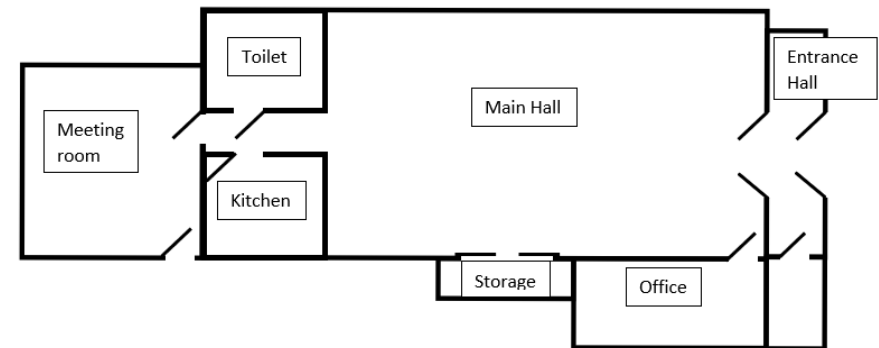
Hire - For booking enquiries please contact:

Charlotte Jim - 01444 811833

parish.clerk@balcombeparishcouncil.com

Please note The minimum hire period is 2 hours.

Hall Layout



About the Hall

Bramble Hall is a multi-functional, meeting space with a dramatic vaulted ceiling. Free Wi-Fi is available.

It provides a delightfully light and airy environment suited to clubs and societies, exercise classes, craft workshops and private parties. There is seating for up to 60 people (rows) and 50 (with tables).

In addition to this there is a well-equipped kitchen with cooker and instant hot water,

and a further room which is ideally suited to smaller groups or for laying out buffet food etc.

The hall also benefits from level access and a disabled toilet. There is some storage space for regular users.

Kitchen - may be used for preparing and serving light refreshments, hot and cold drinks, etc. It has a cooker/hob, sink, refrigerator (in the meeting room), and a hot-water urn. A hatch gives access to the main Hall. Cutlery and crockery are also available.

Tables and chairs - There are 10 6ft trestle tables and approximately 60 chairs available for use, and are inclusive in the hire. These are kept in the storeroom to the side of the main hall and in the rear meeting room.

Toilet - There is one unisex disabled toilet situated off the central lobby.

Car parking - There is no designated car park for Bramble Hall; although parking is available in the neighbouring roads.

Alcohol - If you intend to sell alcohol at your event in our Village Hall you will require a Temporary Event Notice (TEN) which can be obtained, on application, from Mid Sussex Council. Click here for more information.

<https://www.midsussex.gov.uk/licensing-business/temporary-event-notices/>

