

# M23

## Upgrade to smart motorway

### Junctions 8 to 10



# Junctions 8 to 10

We are improving the busy 18km (11 miles) stretch of the M23 between junction 8 near Merstham and junction 10 near Copthorne by upgrading it to an all lane running (ALR) smart motorway.

Construction started in March 2018. It will be completed in March 2020.

This means there will be:

- An additional lane for traffic increasing capacity to reduce congestion.
- More technology on the road to manage incidents.
- More reliable journeys.



## About smart motorways

Smart motorways are a technology driven approach to the use of our motorways, increasing capacity and relieving congestion while maintaining safety. Smart motorways help make journey times more reliable.

## Public information exhibitions

You can find out more about the plans for junctions 8 to 10 at these exhibitions. Highways England and design and construction consultants will be available to discuss the scheme and answer your questions.

## Venues

**Nutfield Lodge**  
**Nutfield Road,**  
**Redhill, Surrey, RH1 4ED.**

- Monday 16 April 2018  
3pm – 8pm

**Burstow Village Hall**  
**Whealers Lane,**  
**Smallfield, RH6 9PT.**

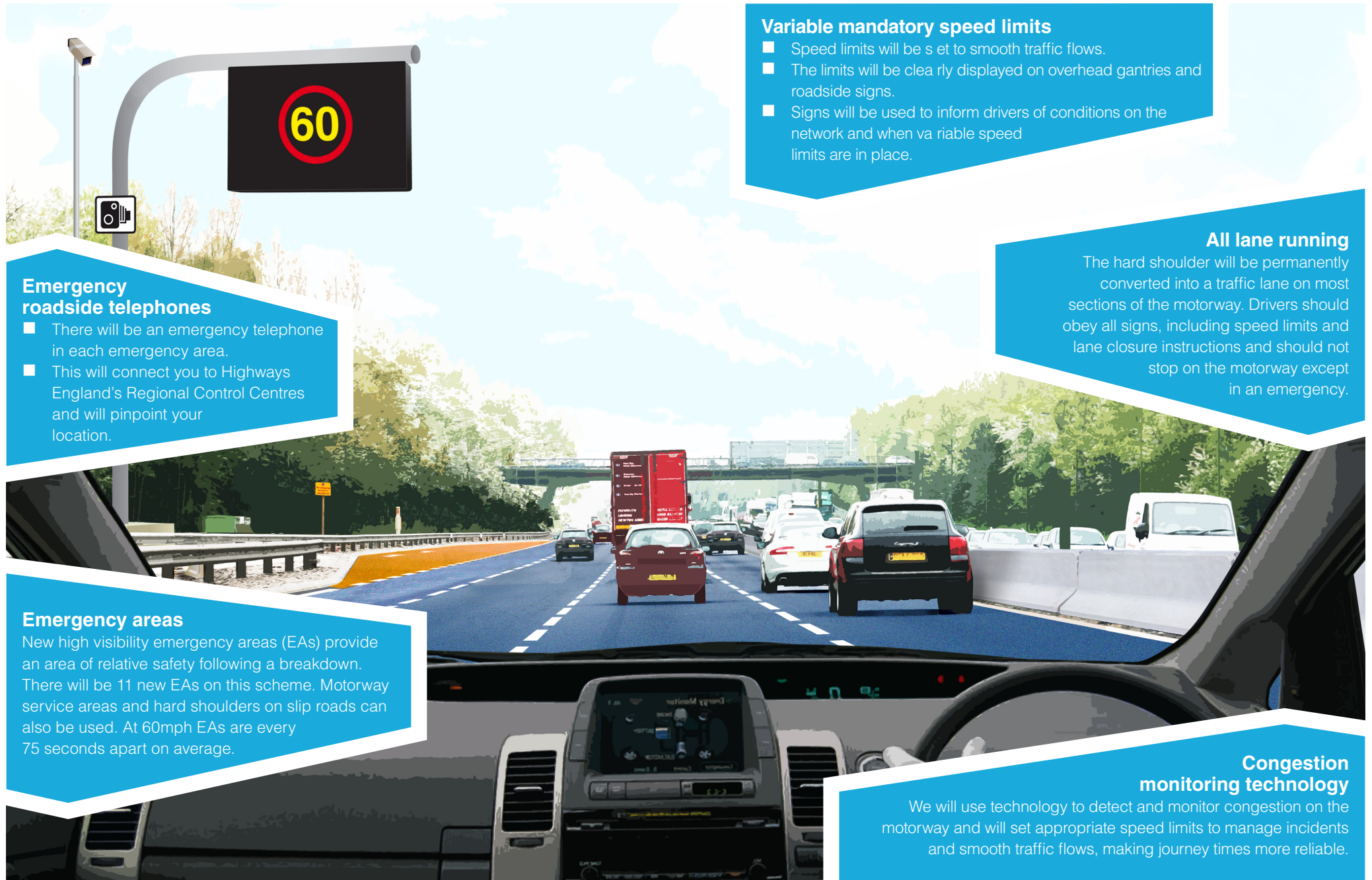
- Thursday 26 April 2018  
3pm – 8pm

**Gatwick Airport**  
**South Terminal Arrivals (Level 2)**  
**Perimeter Road, Horley,**  
**Gatwick, RH6 0NP.**

- Tuesday 24 April 2018  
3pm – 8pm

**It is important for drivers to understand the different types of technology and features used on smart motorways**

# What smart motorways include



## Emergency roadside telephones

- There will be an emergency telephone in each emergency area.
- This will connect you to Highways England's Regional Control Centres and will pinpoint your location.

## Emergency areas

New high visibility emergency areas (EAs) provide an area of relative safety following a breakdown. There will be 11 new EAs on this scheme. Motorway service areas and hard shoulders on slip roads can also be used. At 60mph EAs are every 75 seconds apart on average.

## Variable mandatory speed limits

- Speed limits will be set to smooth traffic flows.
- The limits will be clearly displayed on overhead gantries and roadside signs.
- Signs will be used to inform drivers of conditions on the network and when variable speed limits are in place.

## All lane running

The hard shoulder will be permanently converted into a traffic lane on most sections of the motorway. Drivers should obey all signs, including speed limits and lane closure instructions and should not stop on the motorway except in an emergency.

## Congestion monitoring technology

We will use technology to detect and monitor congestion on the motorway and will set appropriate speed limits to manage incidents and smooth traffic flows, making journey times more reliable.




# Where will this section of smart motorway be?

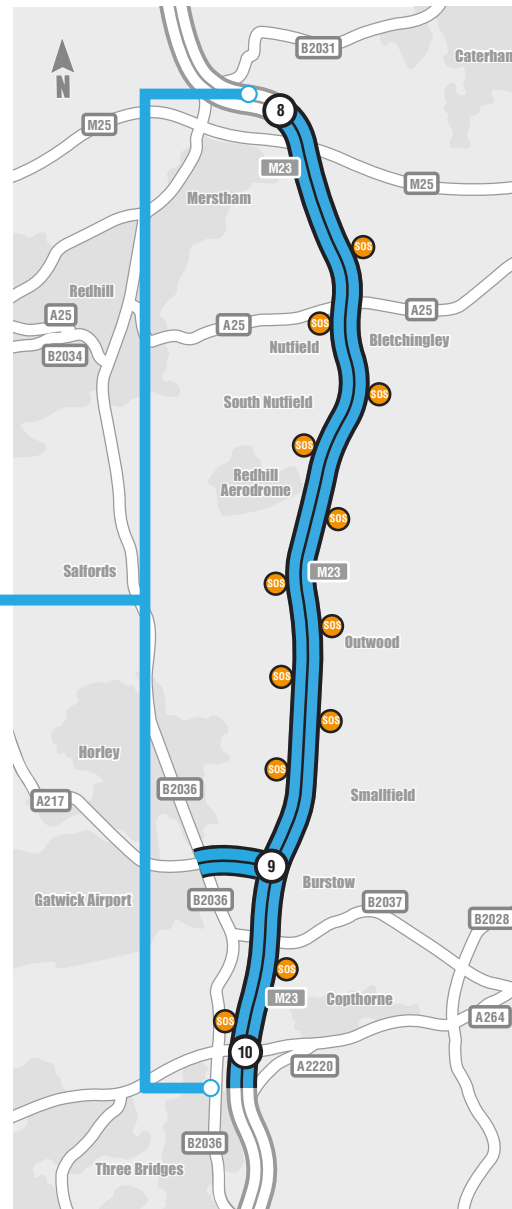
The map shows where the new section of smart motorway will be.

## All lane running

This scheme will have no hard shoulder between junctions 8 and 10. There will be four lanes permanently open for use by road users. High visibility emergency areas will be available.


## Emergency areas




There will be 12 new high visibility EAs within the M23 junction 8 to 10 smart motorway scheme. Motorway service areas and hard shoulders on slip roads can also be used. The emergency areas are positioned approximately where shown with this symbol .

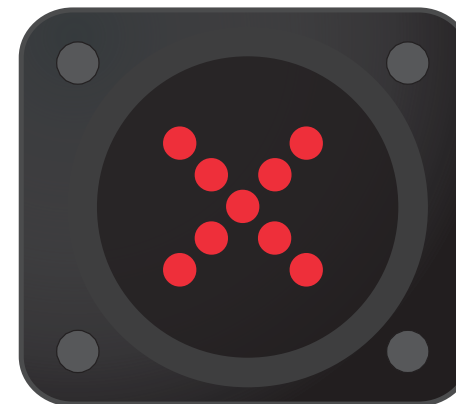


© Crown copyright and database rights 2018 OS 100030649

# Safety, red sign and incidents

You will see red  symbols on a gantry sign over the motorway or at the side of the motorway:

- We use a red  symbol to show that a lane is closed because of an incident or people working on the road.
- Red  also provide access for emergency services.
- Driving in a lane with a red  symbol is dangerous and drivers must **not** use it.



Incident management is controlled by teams in our control centres:

- Incidents will be detected by traffic sensors, CCTV or calls from the public.
- The control centre will set signs to protect incidents and clear an access route for emergency vehicles.
- Control centre staff will monitor traffic conditions throughout each incident, ensure signs are set to manage traffic, and will reopen lanes as soon as it is safe to do so.



# What to do if you break down

If you need to stop in an emergency on a smart motorway:

- Use an emergency area, motorway service area or leave at the next junction. If that is not possible, try to get your vehicle off the carriageway, if it is safe to do so.



If you have to stop in a live lane:

- Put your hazard warning lights on to help other drivers see you and help our control room staff spot you on CCTV.
- If you are in the left hand lane and it is safe to do so, exit the vehicle via the left hand door. Wait behind the barrier if possible.
- If you cannot exit the vehicle, do not feel it is safe to do so or there is no other place of relative safety, remain in the vehicle. Keep your seat belt on and dial 999.



# Our contact details

We have several ways you can contact us to discuss the M23 junctions 8 to 10 smart motorway scheme.

Phone:

**0300 123 5000**

Email:

**M23J8\_10Smart@highwaysengland.co.uk**

Mailing address:

**M23 J8 to 10 Project Team  
Highways England  
The Cube,  
199 Wharfside Street,  
Birmingham,  
B1 1RN.**

Website:

**<http://roads.highways.gov.uk/projects/m23-junctions-8-to-10-smart-motorway/>**

**As soon as Highways England is alerted, our Regional Control Centre will close lanes to protect you and your vehicle until help arrives**

[illegible]This image shows a blank sheet of white paper with horizontal blue ruling lines. The lines are evenly spaced and run across the width of the page. There are no margins, text, or other markings on the paper.

If you need help accessing this or any other Highways England information, please call **0300 123 5000** and we will help you.

© Crown copyright 2018.

You may re-use this information (not including logos) free of charge in any format or medium, under the terms of the Open Government Licence. To view this licence: visit [www.nationalarchives.gov.uk/doc/open-government-licence/](http://www.nationalarchives.gov.uk/doc/open-government-licence/) write to the **Information Policy Team, The National Archives, Kew, London TW9 4DU**, or email [psi@nationalarchives.gsi.gov.uk](mailto:psi@nationalarchives.gsi.gov.uk).

Mapping (where present): © Crown copyright and database rights 2018 OS 100030649. You are permitted to use this data solely to enable you to respond to, or interact with, the organisation that provided you with the data. You are not permitted to copy, sub-licence, distribute or sell any of this data to third parties in any form.

This document is also available on our website at [www.gov.uk/highways](http://www.gov.uk/highways)  
For an accessible version of this publication please call **0300 123 5000** and we will help you.

If you have any enquiries about this publication email [info@highwaysengland.co.uk](mailto:info@highwaysengland.co.uk) or call **0300 123 5000**\*. Please quote the Highways England publications code **PR79/17**.

Highways England creative job number BRS18\_0075.

\*Calls to 03 numbers cost no more than a national rate call to an 01 or 02 number and must count towards any inclusive minutes in the same way as 01 and 02 calls.  
These rules apply to calls from any type of line including mobile, BT, other fixed line or payphone. Calls may be recorded or monitored.

Printed on paper from well-managed forests and other controlled sources  
when issued directly by Highways England.

Registered office Bridge House,  
1 Walnut Tree Close, Guildford GU1 4LZ  
Highways England Company Limited registered  
in England and Wales number 09346363



Visit us online at

[www.gov.uk/government/collections/  
smart-motorways](http://www.gov.uk/government/collections/smart-motorways)